

SOLON SOLquick

Electrical specifications – typical (STC)

STC (Standard Test Conditions): 1,000 W/m², 77 ± 3.6°F (25 ± 2°C), AM 1.5

Capacity rating	P _{max}	285 Wp	280 Wp
Module efficiency		14.39%	14.14%
Rated voltage	V _{mpp}	36.25 V	35.95 V
Rated current	I _{mpp}	7.86 A	7.78 A
Open circuit voltage	V _{OC}	44.30 V	44.08 V
Short circuit current	I _{SC}	8.27 A	8.20 A
Series fuse rating	I _R	15 A	15 A
Maximum system voltage	V _{DC}	600 V	600 V

Measuring tolerance for P_{max}: ±3%

Reduction of module efficiency from 1,000 W/m² to 200 W/m²: <5%

Electrical specifications – typical (NOCT)

NOCT (Normal Operating Cell Temperature): 800 W/m², NOCT, AM 1.5

Capacity rating	P _{max}	207 Wp	204 Wp
Rated voltage	V _{mpp}	32.99 V	32.72 V
Rated current	I _{mpp}	6.29 A	6.23 A
Open circuit voltage	V _{OC}	40.45 V	40.25 V
Short circuit current	I _{SC}	6.71 A	6.66 A

Temperature coefficients (Tc)

Tc of open circuit voltage	-0.35%/K
Tc of short circuit current	0.07%/K
Tc of power	-0.45%/K
NOCT	114.8°F ± 3.6°F (46°C ± 2°C)

Measuring tolerance for all final data: ±10% (except P_{max} (STC) and NOCT)

Mechanical specification

Dimensions (H x W x D)	78.28 x 53.75 x 7.99 in.
Weight	Lightweight system- 80 lbs. just 2.8 psf
Inclination	10° nominal
Junction box	1 Tyco junction box with 3 bypass diodes
Cable	PV wire, length 43.31 in. (1,200 mm), 12 AWG (4 mm ²), prefabricated with Tyco Solarlok connector
Front glass	Transparent tempered safety glass, 0.16 in. (4 mm)
Solar cells	72 cells, polycrystalline, 6.14 x 6.14 in. (156 x 156 mm)
Fire class	C
Frame	Frameless

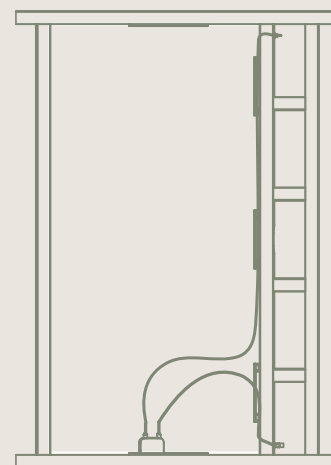
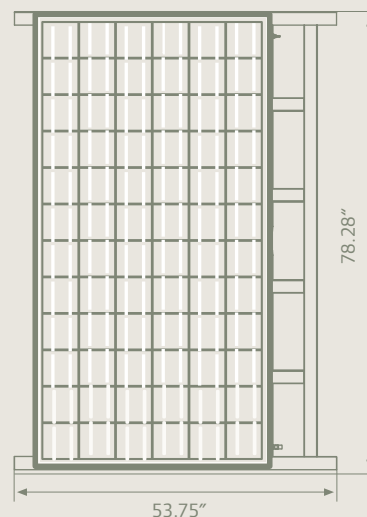
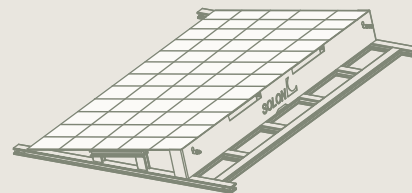
Permissible operating conditions

Temperature range	-40°F to +185°F (-40°C to +85°C)
Maximum surface load capacity	Tested up to 5,400 Pa according to IEC 61215 (advanced test)
Resistance against hail	Maximum diameter of 1 in. (25 mm) with impact speed of 51.5 mph (23 m/s)
Wind load	Wind load 1,500 Pa; Wind tunnel testing pending
Snow load	2,400 Pa

Guarantees and certifications

Product warranty	10 years ¹⁾
Performance guarantee	Guaranteed output of 95% for 5 years, 90% for 10 years, 87% for 15 years, 83% for 20 years and 80% for 25 years ¹⁾
Approvals and certificates	UL listed; CEC pending

Drawing



SOLON Corporation
6950 S. Country Club Rd
Tucson · AZ · 85756-7151
Phone +1 520 807-1300
Fax +1 520 807-4046
E-Mail solon.us@solon.com



SOLON SOLquick

Photovoltaic System for Flat Rooftops.

SOLON
Innovation

- › Versatile design for all types of flat roofs
- › Fully-integrated unit—No tools needed
- › Fast plug-and-play concept
- › Suitable for lightweight roofs from 2.8 lbs/ ft² load-carrying capacity
- › Low-cost installation
- › No grounding required



*Innovative.
Fast. Simple.*

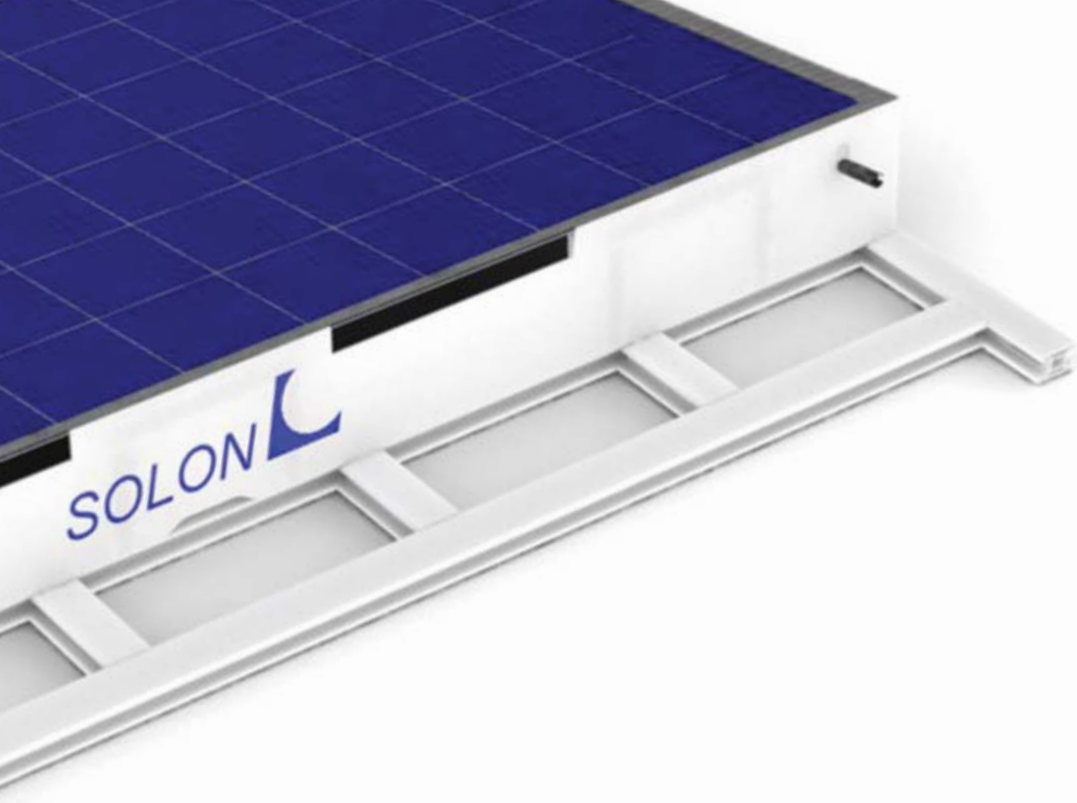
SOLON SOLquick's innovative design for flat roofs integrates the solar module and mount into one unit for a fast, easy and tool-free installation. Frameless modules are installed on the unit at an inclination of 10 degrees to ensure maximum area and energy optimization. The unique flat-roof system is suitable for all roof types with a carrying load capacity of less than 2.8 lbs/ft².

ENGINEERED WITH
FIBREX[®]

Fibrex[®] Material from Andersen Corporation:

Ideally suited for commercial, industrial and utility-scale systems, SOLON SOLquick's lightweight frame is constructed with Fibrex materials from Andersen Corporation. Used in outdoor construction since 1993, the patented Fibrex composite material is made out of reclaimed wood fiber from Andersen manufacturing operations and a special thermoplastic polymer, some of which is also partially reclaimed. Fibrex material is non-conductive as well as moisture and heat resistant. The outdoor durability and reliability of Fibrex material has been tested for more than 18 years by the worldwide leader of high quality windows and doors, Andersen[®].

"Andersen" and "Fibrex" are registered trademarks of Andersen Corporation.



Higher performance.

- › Optimal energy output due to 10° inclination with no shading
- › Maximum output per square foot of roof area used

Simple and Fast Installation.

- › Modular unit—ships as fully-integrated laminate and mount
- › No tools or assembly required
- › Streamlined, labor saving design
- › No staging required
- › Flexible installation solutions for various roof surfaces—self-ballasted, ballasted and roof penetrating

Reliable Statics.

- › System load-carrying capacity of only 2.8 psf
- › Meets the requirements of UL
- › Wind tunnel tested (pending)

Roof Protection.

- › Non-penetrating installation design¹⁾
- › Lightweight materials
- › Roof-protecting option can be affixed to roof with standard penetration methods.
- › Low edge loading

Stability in all Aspects.

- › Innovative materials for long-term durability
- › Quick-click interconnects
- › No grounding required

For Sustainable Satisfaction: Up to 25 Years Guarantee.

In addition to our comprehensive warranties and services, we provide up to 25 years guarantee. SOLON SOLquick is not only distinguished by its reliability, but it is also easy on your roof.

SOLON Advantages:

- › 10-year product guarantee¹⁾
- › 25-year performance guarantee¹⁾
- › Positive sorting of power classes (0 to + 4.99 Wp)

¹⁾According to SOLON Product and Performance Guarantee.

¹⁾ Depends on snow and wind load, seismic terrain category and height of building.

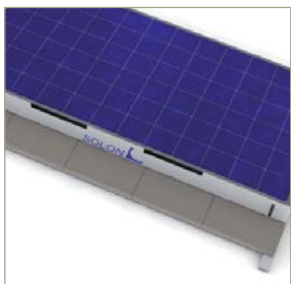


Tool-Free Installation.



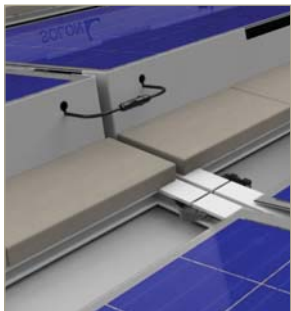
1. Place.

- › Mark the corner of the first SOLON SOLquick row
- › Remove product from wrapped pallet
- › Place SOLON SOLquick unit on roof in the designated location



2. Secure.

- › Link the units together with the quick-click interconnection strap
- › Three fast mounting methods for customer needs
- › Self-ballasting, ballasting or roof penetrating—depending on the roof structure



3. Connect.

- › Cable channels already integrated (UV protection)
- › Electrically interconnect modules
- › No grounding required